

## Model 3602 / 3603 / 3604 Reset Instructions

### ! Do not reset while counter is **RUNNING** !

Make sure that all of the wheels have stopped spinning before resetting.

### ! Do not use **AN EXTERNAL DEVICE** to reset counter !

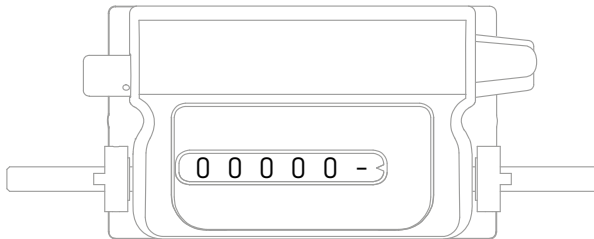
The reset should be done manually, by hand only. Do not use a wooden/metal pole.

### ! Do not use **EXCESSIVE FORCE** to reset counter !

Perform an assertive reset pushing the lever all the way to the stop in one single motion. It is recommended to perform the reset action twice to ensure a full clean reset.

Make sure that all of the 0's on the display are lined up after the reset before starting your next measurement.

### GOOD RESET



### BAD RESET

